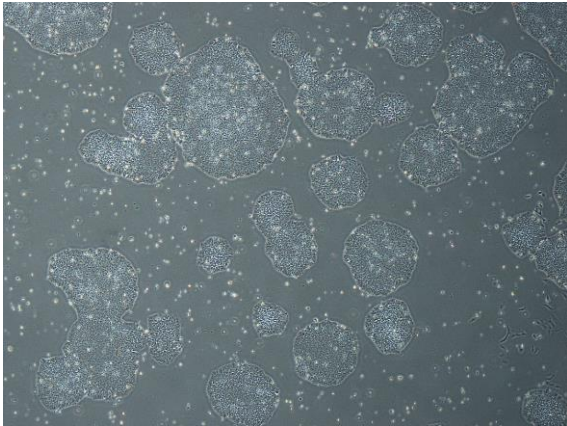
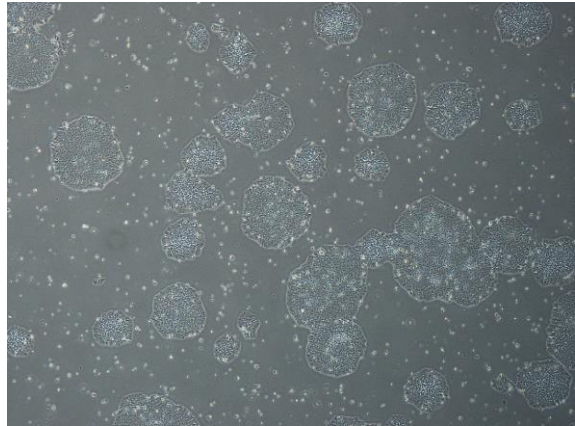


【 CiRA-j-1577 】 Morphology of iPSC colonies

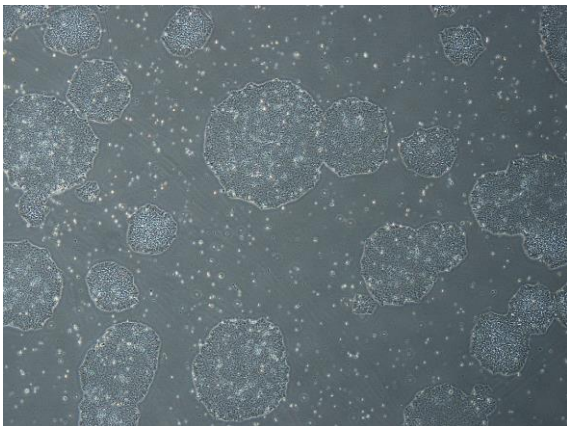
CiRA-j-1577-A: passage-3



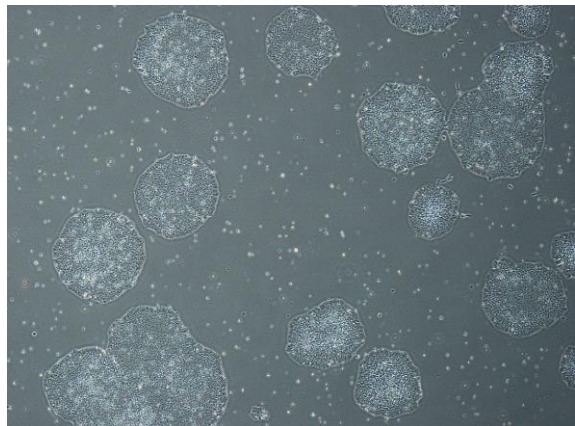
CiRA-j-1577-B: passage-3



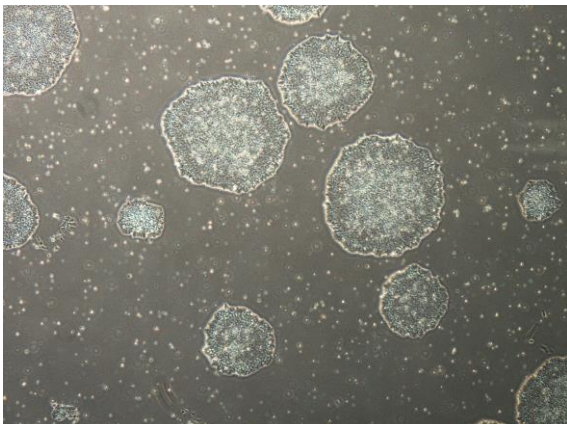
CiRA-j-1577-C: passage-3



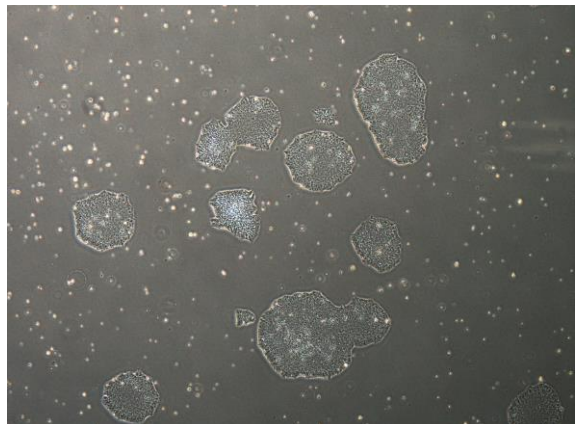
CiRA-j-1577-D: passage-3



CiRA-j-1577-E: passage-3



CiRA-j-1577-F: passage-3



(All images were captured at 4x magnification)